



Facsimile

### LAB-GROWN DIAMOND REPORT

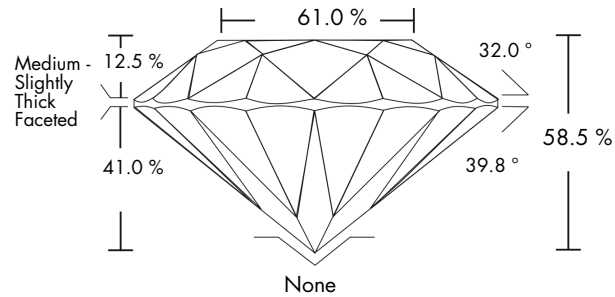
**Report No : SGLXD426415E**

**MUMBAI**

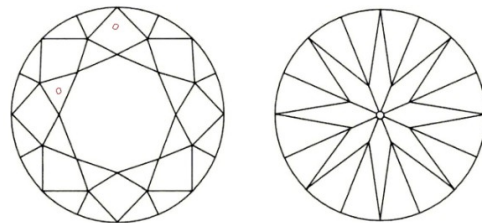
#### GRADING INFORMATION

Shape	Round Brilliant
Carat Weight	1.55 carat
Clarity Grade	VS1
Color Grade	E
Cut Grade:	
Proportions	Good
Polish	Very Good
Symmetry	Very Good
Fluorescence	None
Laser Inscribed	LAB GROWN SGLXD426415E

### PROPORTIONS



### CHARACTERISTICS



#### Key to symbols

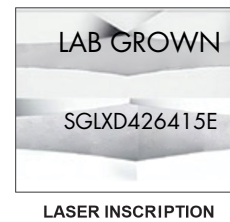


Red symbols denote internal characteristics. Green and Black symbols denote external characteristics. Symbols do not usually reflect the exact shape or size of the characteristics. All characteristics may not be shown.

[www.sgl-labs.com](http://www.sgl-labs.com)

### TECHNICAL INFORMATION

Measurements	7.49 - 7.53 x 4.39 mm
Girdle	Medium - Slightly Thick
Culet	None
Depth	58.5 %
Table Width	61.0 %
Crown Height	12.5 %
Pavilion Depth	41.0 %



LASER INSCRIPTION



Scan the code with a smartphone to view the certificate on our website



AUTHENTICATED IN SGL



### LAB-GROWN DIAMOND REPORT

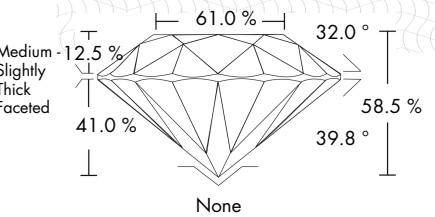
**Report No.SGLXD426415E**

**MUMBAI**

#### GRADING RESULTS

Shape	Round Brilliant
Carat Weight	1.55 carat
Clarity Grade	VS1
Color Grade	E
Cut Grade Value	Good
Cut Polish	Very Good
Cut Symmetry	Very Good
Fluorescence	None

#### ADDITIONAL GRADING INFORMATION



**Report No. SGLXD426415E**

#### GRADING INFORMATION

Shape	Round Brilliant
Carat Weight	1.55 carat
Clarity Grade	VS1
Color Grade	E
Cut Grade :	
Proportion	Good
Polish	Very Good
Symmetry	Very Good
Fluorescence	None
Laser Inscribed	LAB GROWN SGLXD426415E

#### TECHNICAL INFORMATION

Measurements	7.49 - 7.53 x 4.39 mm
Girdle	Medium - Slightly Thick
Culet	None
Total Depth	58.5 %
Table Width	61.0 %
Crown Height	12.5 %
Pavilion Depth	41.0 %



Proud supporter of  
**JVC**  
Diamond Supply Chain Protection Kit